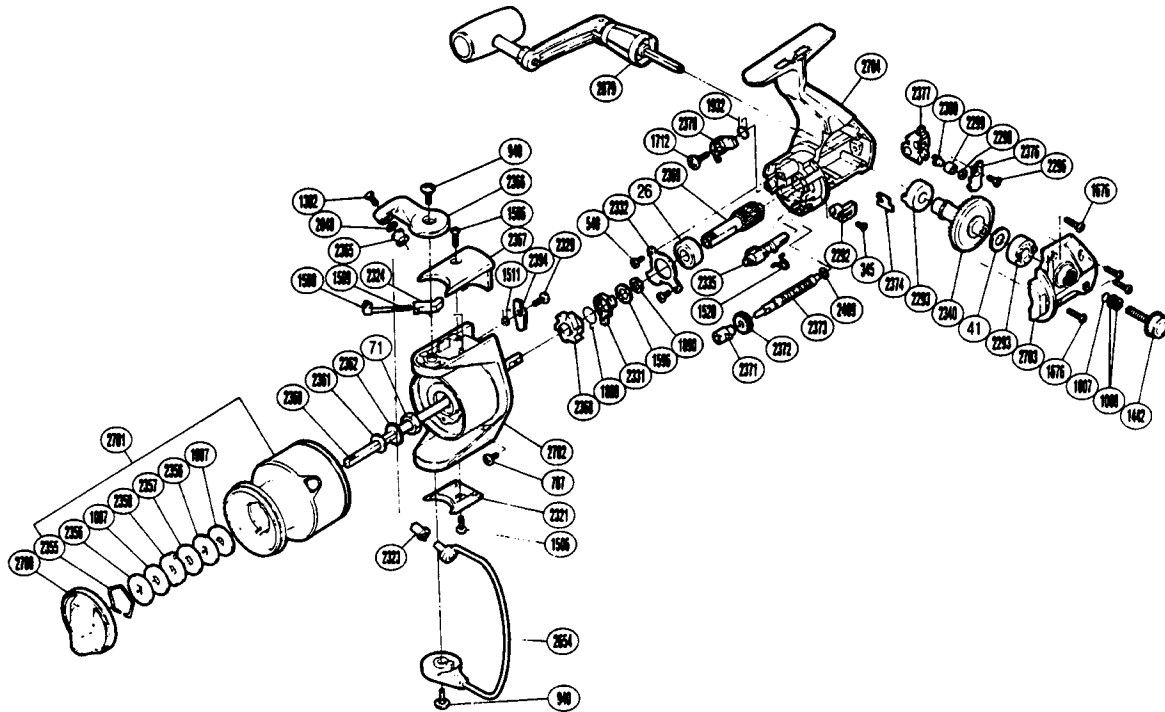


EXPLODED PARTS VIEW
BA AERO
8-12#

SHIMANO®

1990 REPAIR MANUAL

Shimano American Corporation, One Shimano Dr.
 Irvine, CA 92718



**TO ORDER: USE RD PREFIX
 WITH PART NUMBER**

PARTS LIST

RD #	DESCRIPTION	RD #	DESCRIPTION	RD #	DESCRIPTION
0026	Ball Bearing	1932	Anti-Reverse Pawl Spring	2362	Spool Support
0041	Drive Gear Washer	2048	Line Roller Washer	2365	Line Roller
0071	Rotor Nut	2292	Anti-Reverse Lever	2366	Bail Arm
0345	Anti-Reverse Lever Screw	2293	Drive Gear Bushing	2367	Bail Spring Cover
0540	Anti-Reverse Pawl Screw	2296	Slider Retainer Screw	2368	Anti-Reverse Ratchet
0787	Nut Lock Screw	2298	Spacer	2369	Pinion Gear
0940	Bail Trip Cam Screw	2299	Oscillating Slider Bushing	2370	Anti-Reverse Pawl
1007	Lock Washer Retainer	2300	Oscillating Pawl	2371	Worm Bearing
1008	Handle Lock Washer	2321	Rotor Side Cover	2372	Idle Gear
1087	Drag Washer 1	2323	Line Roller Bushing	2373	Worm Shaft
1302	Line Roller Screw	2324	Bail Spring Guide [B]	2374	Worm Shaft Retainer
1442	Handle Screw Cap	2329	Bail Trip Lever Screw	2376	Oscillating Pawl Cover
1506	Bail Spring Cover Screw	2331	Anti-Reverse Lock Out	2377	Oscillating Slider
1508	Bail Spring Guide A	2332	Bearing Retainer	2394	Bail Trip Lever
1509	Bail Spring	2335	Anti-Reverse Cam	2409	Worm Shaft Spacer
1511	Lever Spring	2340	Drive Gear	2654	Bail Assembly
1520	Anti-Reverse Cam Spring	2355	Drag Washers Retainer	2679	Handle Assembly
1596	Bushing Washer	2356	Key Washer	2700	Drag Knob
1676	Side Cover Screw	2357	Drag Washer 2	2701	Spool Assembly
1712	Anti-Reverse Pawl Screw	2358	Eared Washer	2702	Rotor
1888	Anti-Reverse Lock Out Spring	2360	Main Shaft	2703	Side Cover
1890	Bushing Washer	2361	Spool Washer	2704	Body